

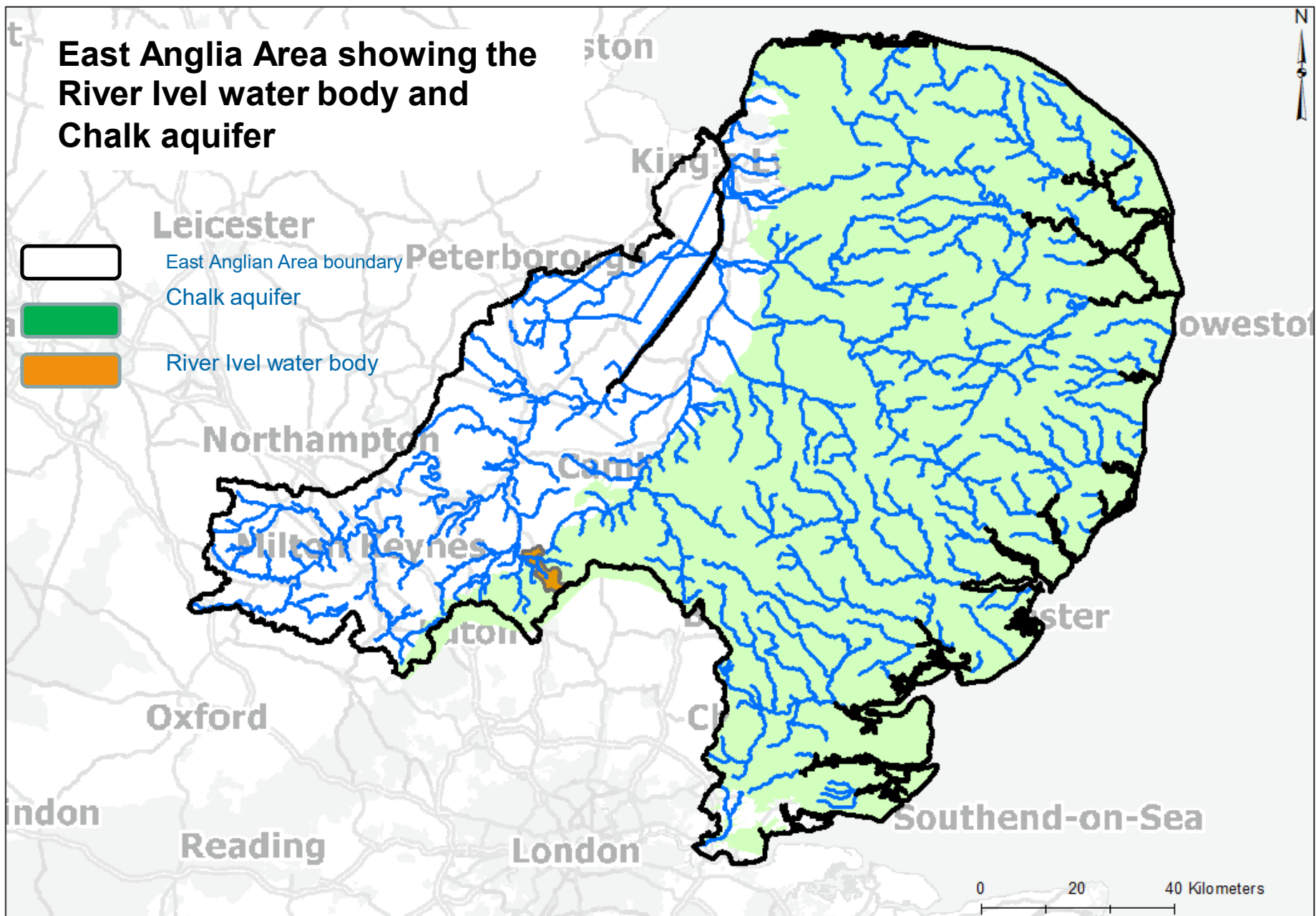


Environment  
Agency

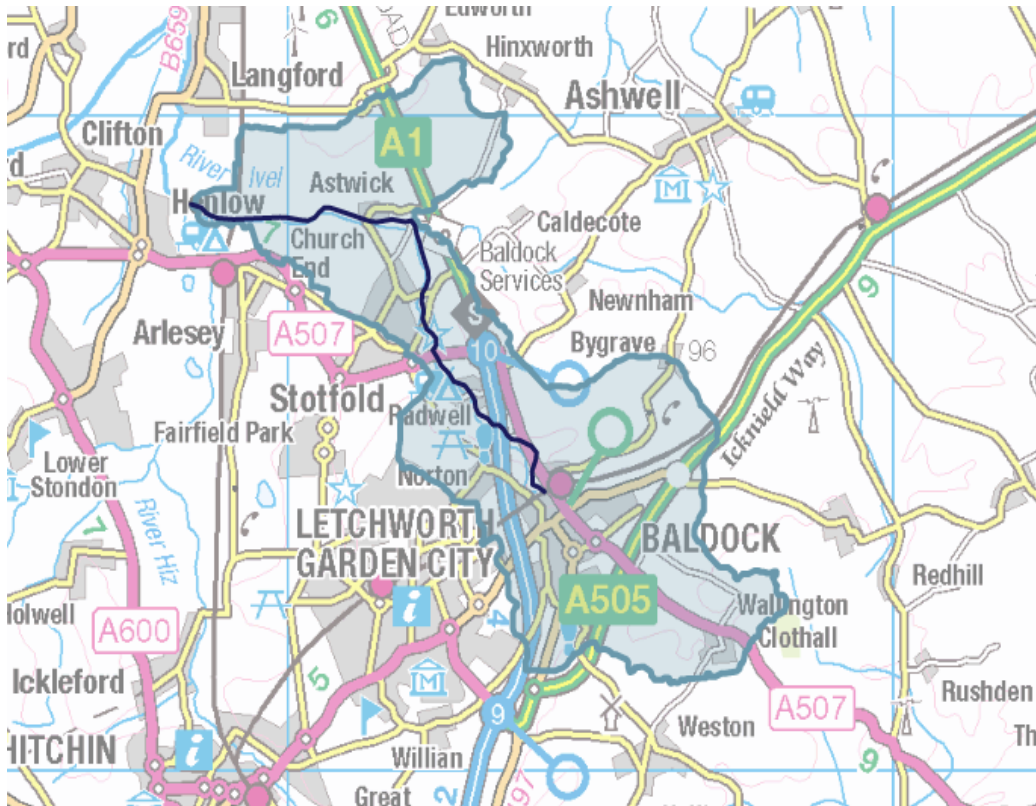
# Baldock & District Committee Meeting – River Ivel

Rob Bakewell and Iain Page  
East Anglia Area  
5<sup>th</sup> October 2020

# East Anglia Area showing the River Ivel water body and Chalk aquifer



# River Basin Management Plan (RBMP)



- Ivel (Upstream of Henlow)
  - Water body ID GB105033037720
  - Spring fed chalk stream
  - Heavily modified historically
  - RBMP assessment point at confluence with River Hiz
  - Modelled flows
- 
- Concerns about the spring flows prompted more localised investigation

# Proposals for Ivel springs

- ➔ Outcome of investigations – low flows at the springs:
  - ➔ River restoration
  - ➔ Capping of existing licences
  - ➔ River augmentation in the spring section
- ➔ Refinement of modelled flow requirements
- ➔ Final support quantity to be confirmed

# Regional water plans

- ➔ Water Resources East but also South East
- ➔ Significant challenges for all sectors
- ➔ Multi sector options
- ➔ Different approach to considering the environment
- ➔ Opportunity to think big and be ambitious

